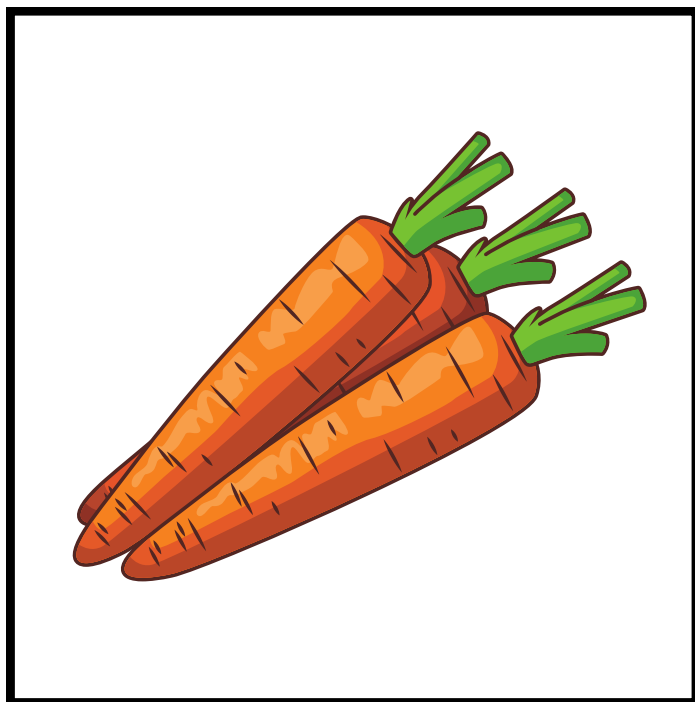
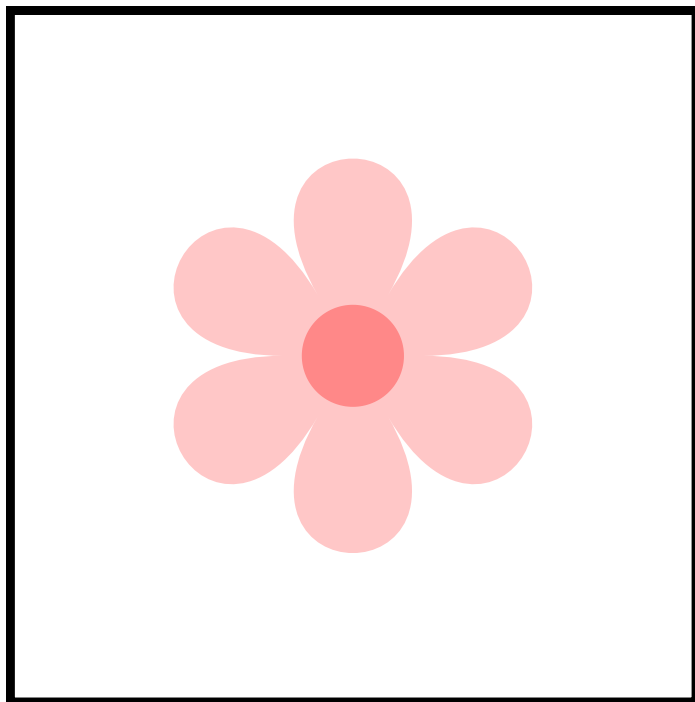
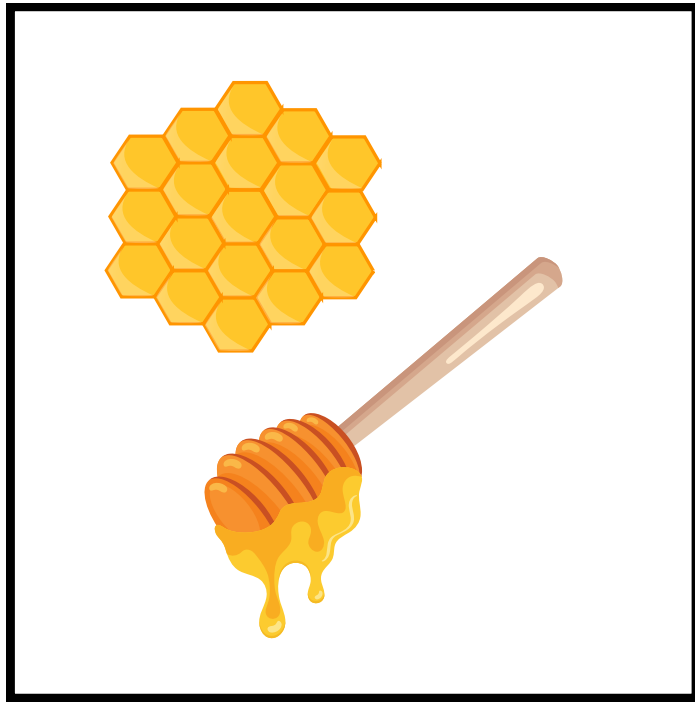


How to use:

- Print, cut, and laminate placemats (labeled “placemats”)
- Put velcro on placemats (front)
- Print, cut, and laminate option cards (labeled “options”)
- Put velcro on the back of the option cards
- There may be more than one option per placemat item
- Discard of any placemats or options that are not applicable or relevant to your client
- Keep in mind the age and needs of the client when utilizing materials
- Print as many copies as needed
- You may share, use, and distribute these materials as desired and appropriate
- You may NOT claim or sale these materials are your own



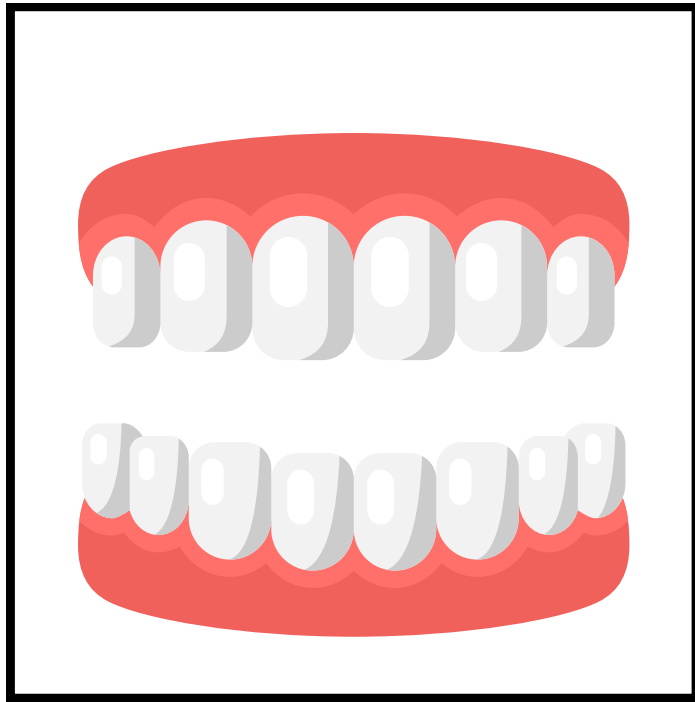
PLACEMAT



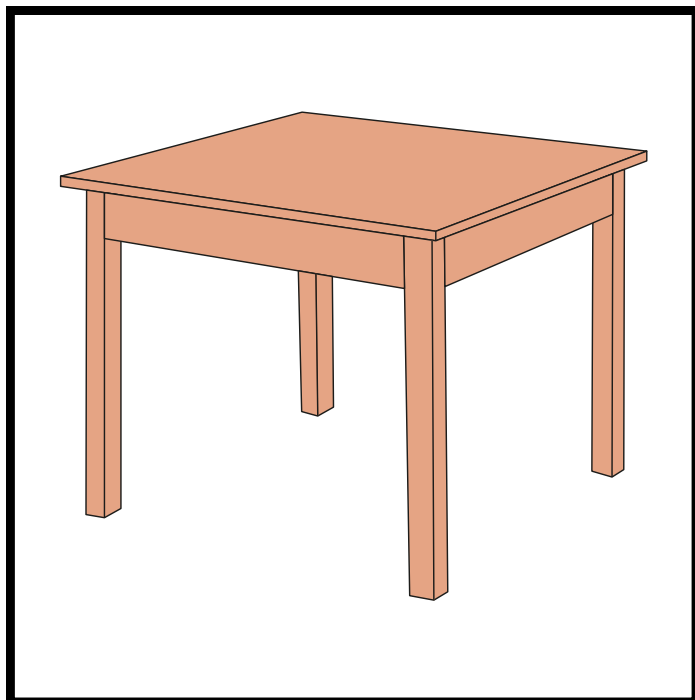
PLACEMAT



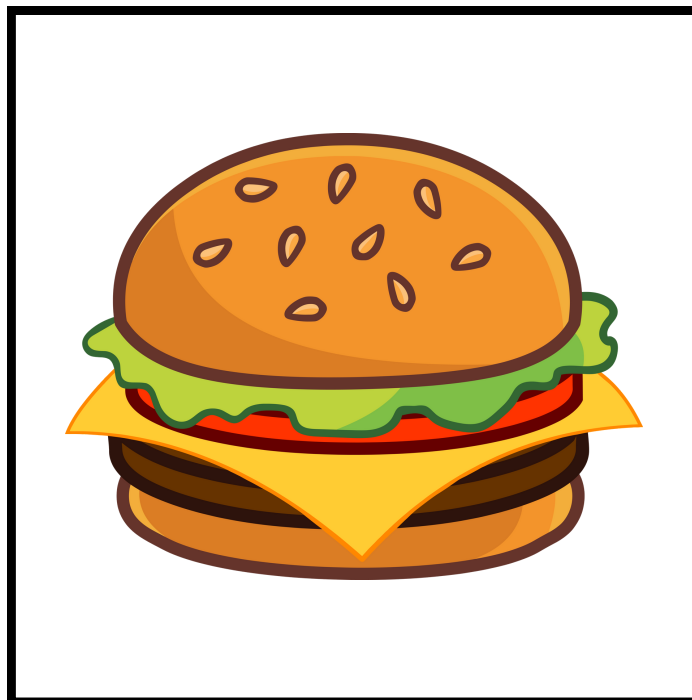
PLACEMAT



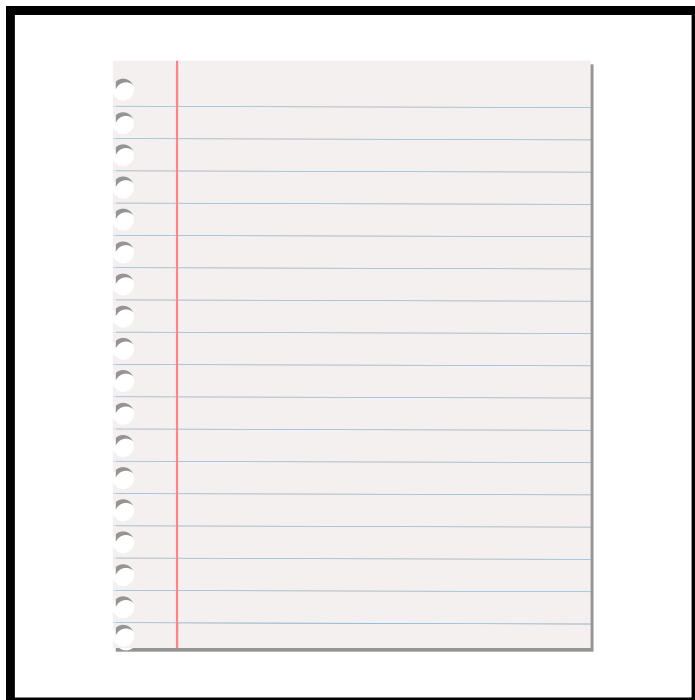
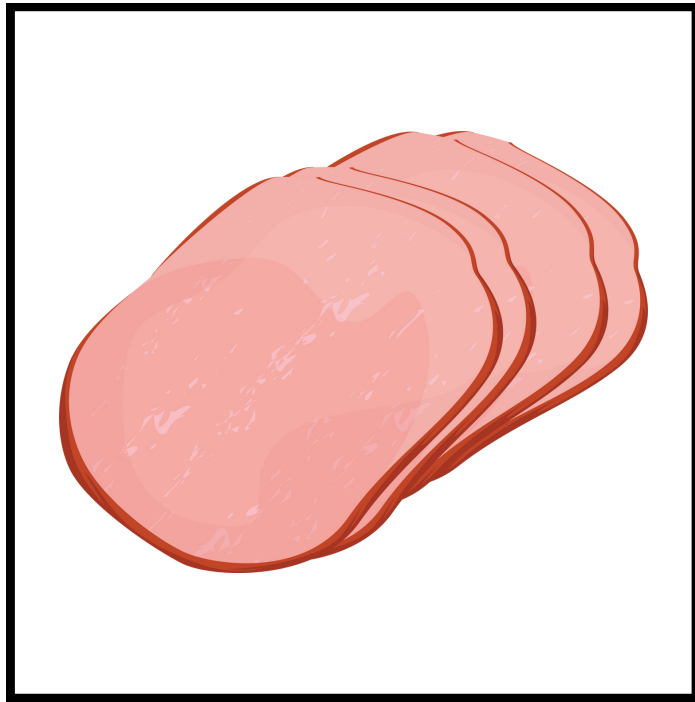
PLACEMAT



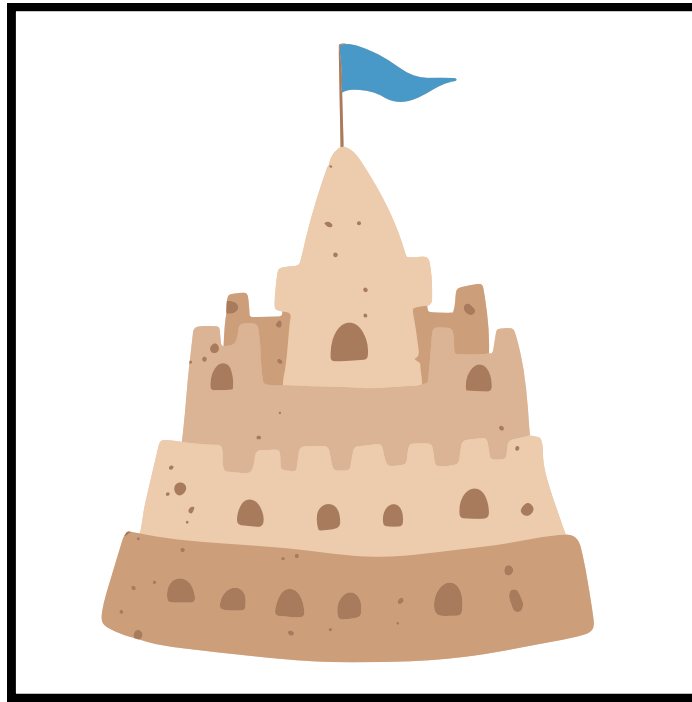
PLACEMAT



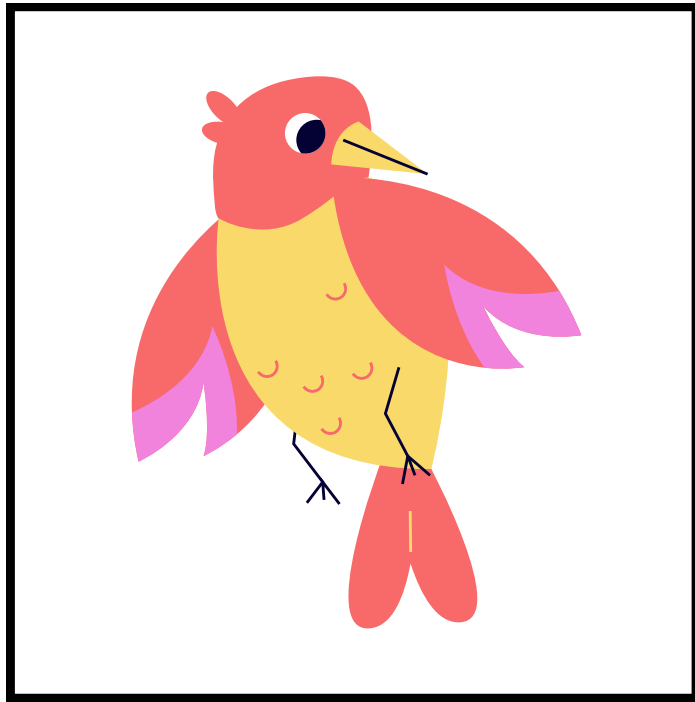
PLACEMAT



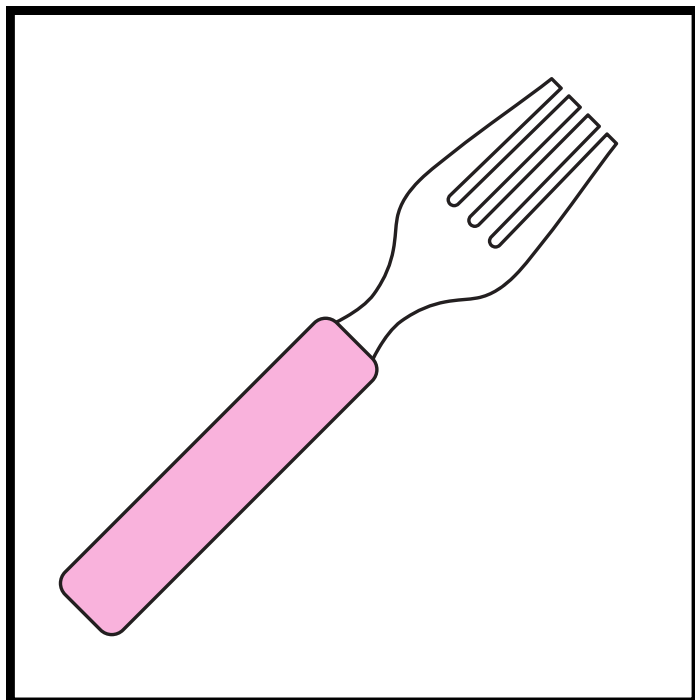
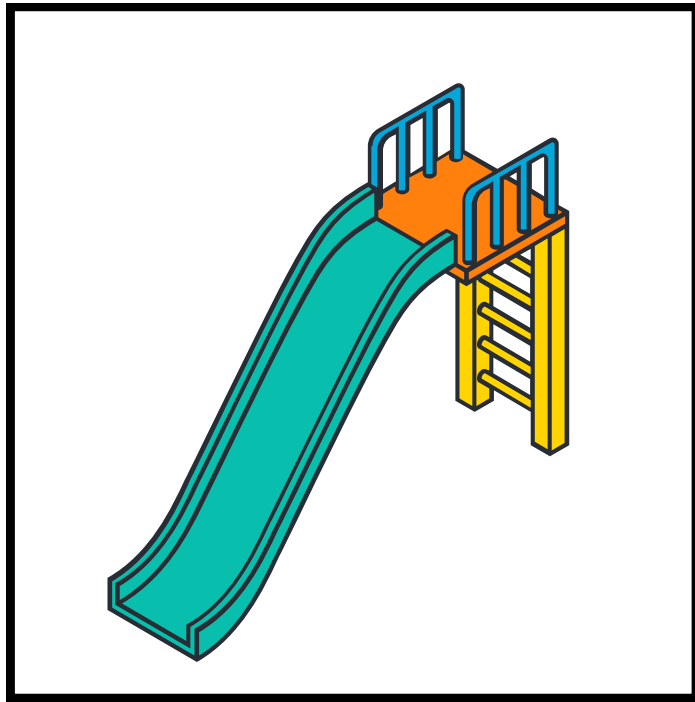
PLACEMAT



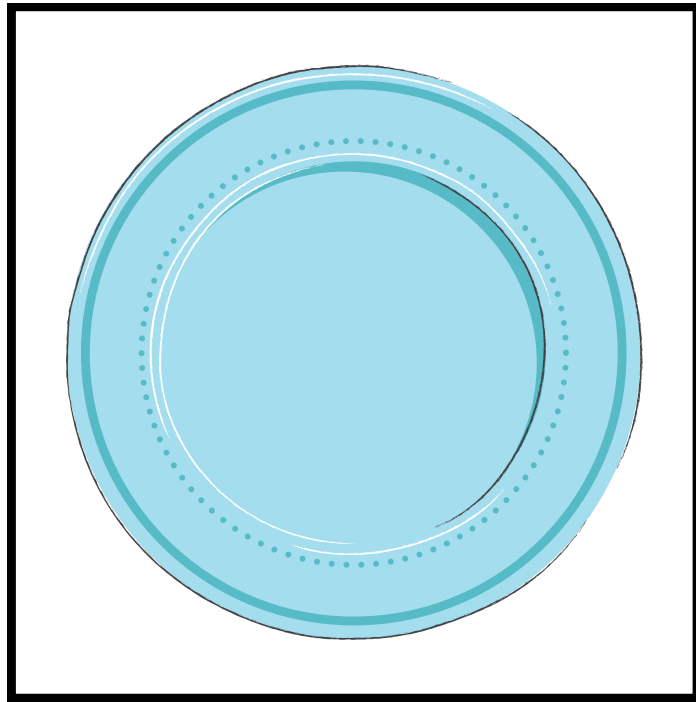
PLACEMAT



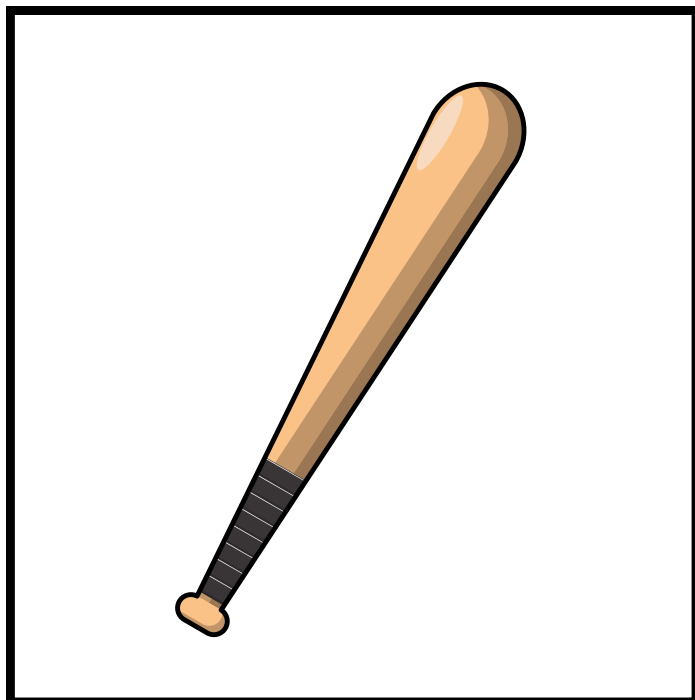
PLACEMAT



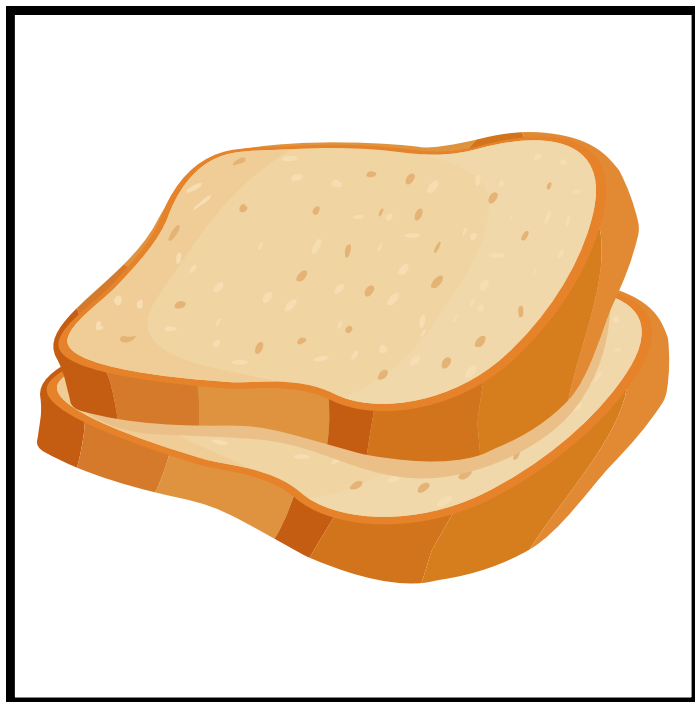
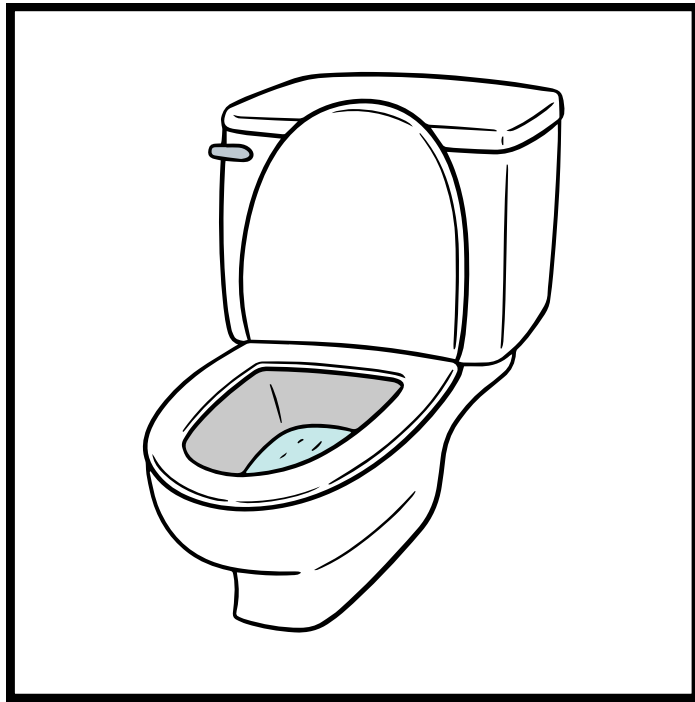
PLACEMAT



PLACEMAT



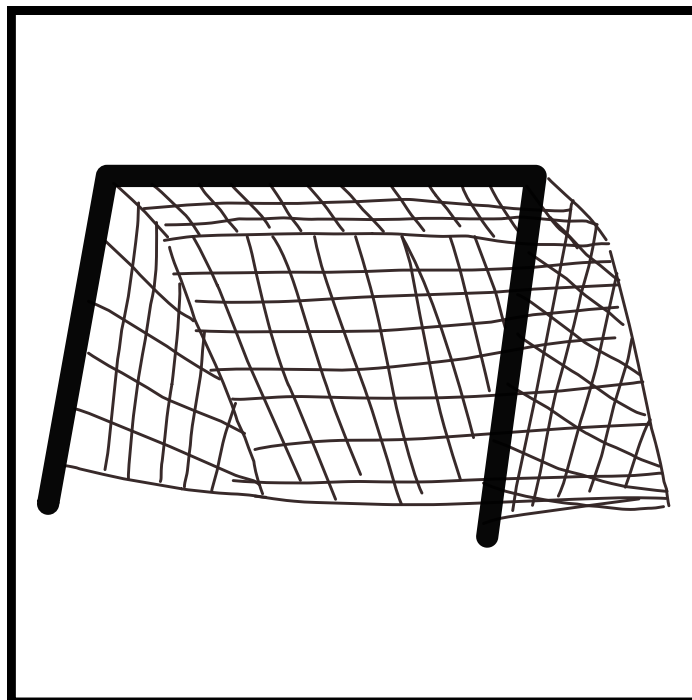
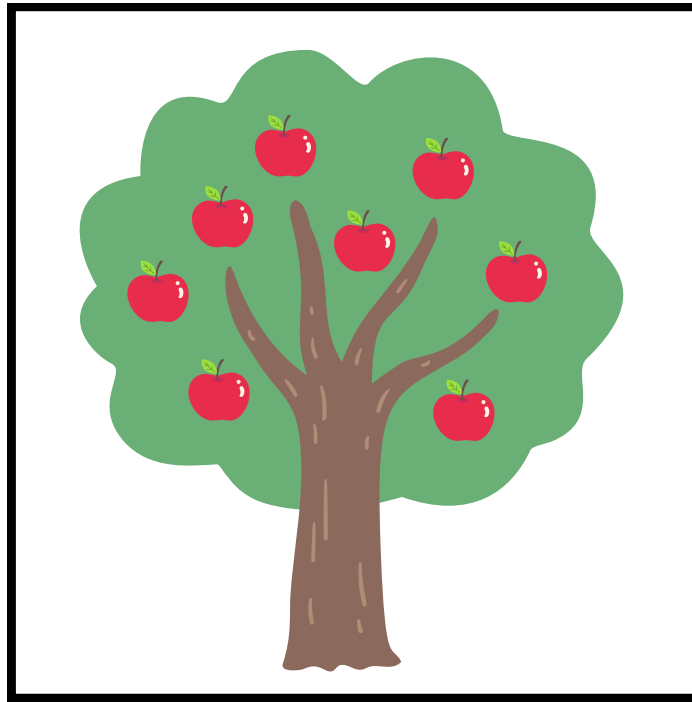
PLACEMAT



PLACEMAT



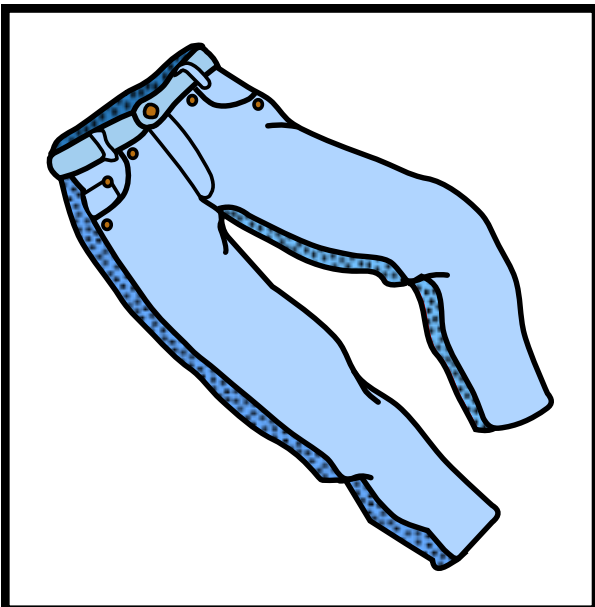
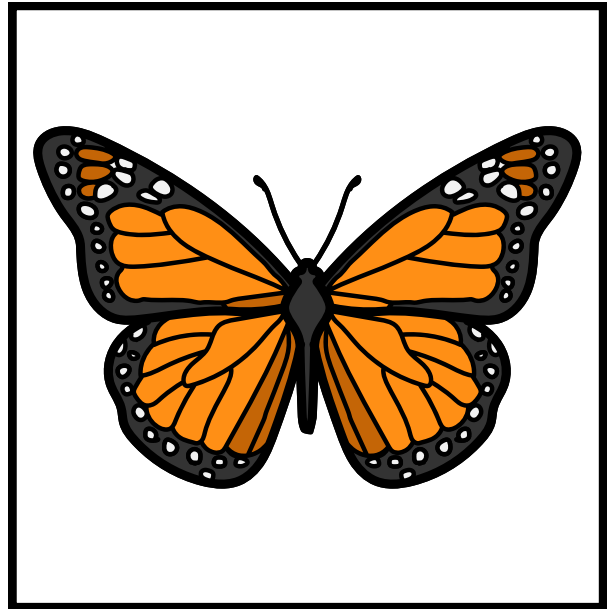
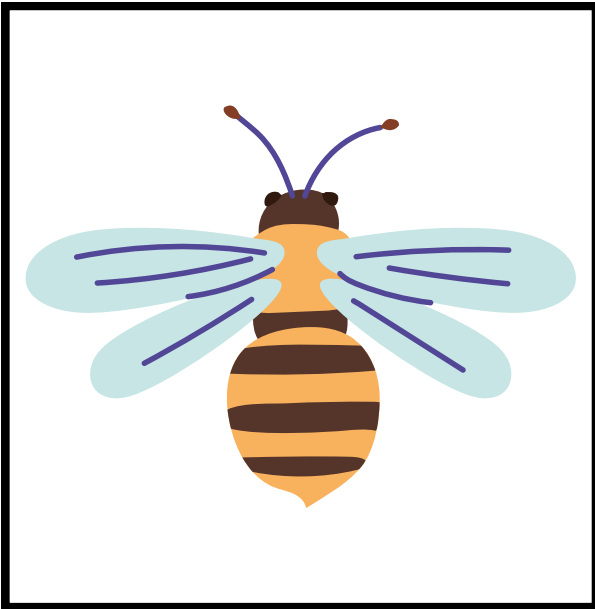
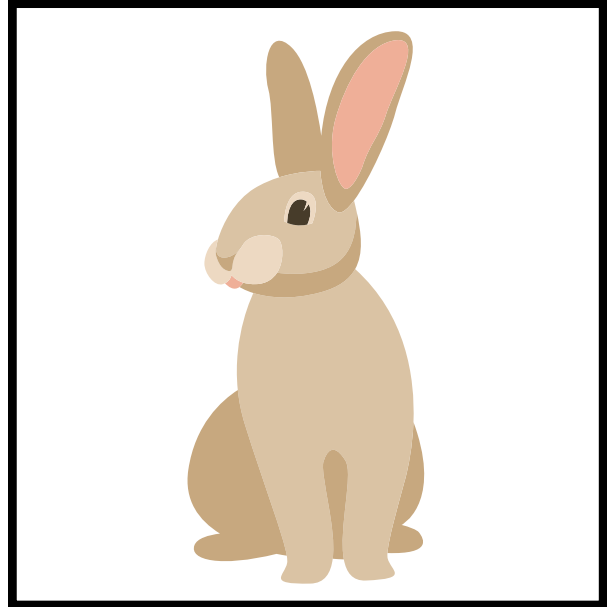
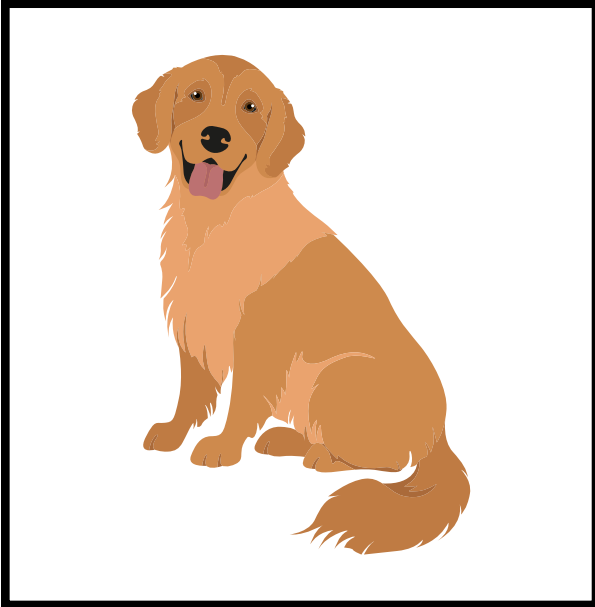
PLACEMAT

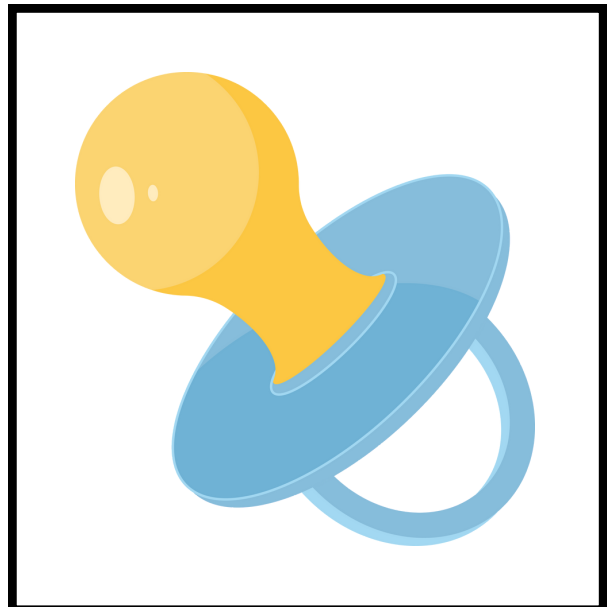
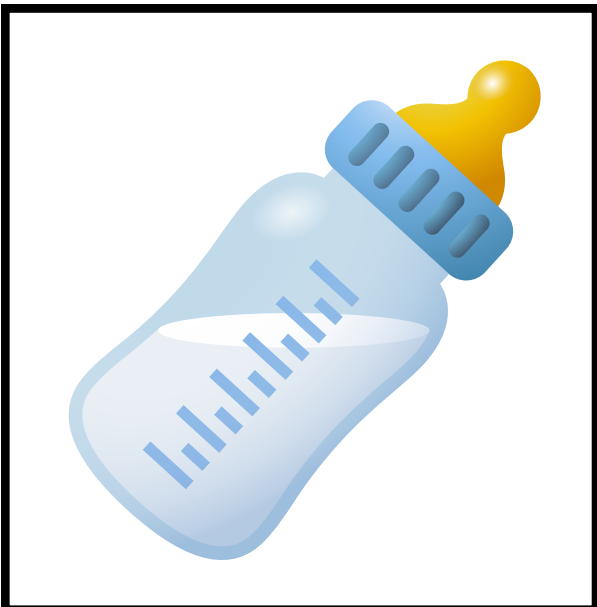
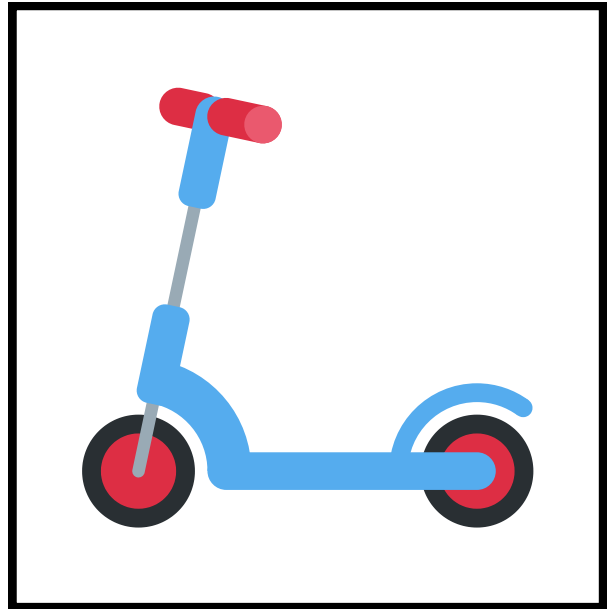
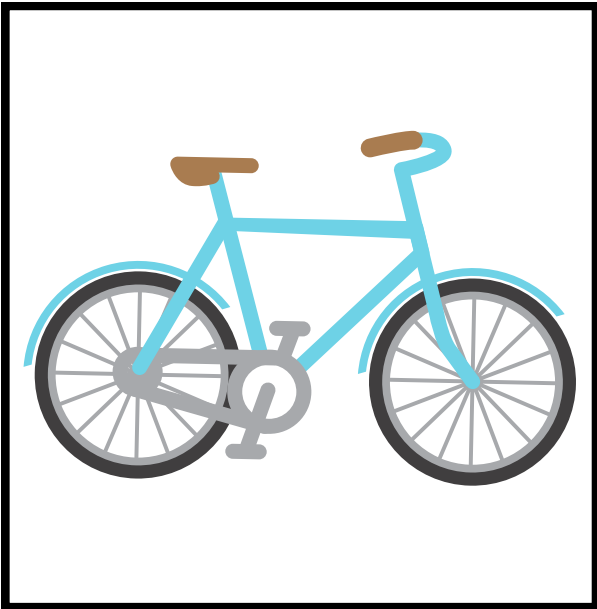
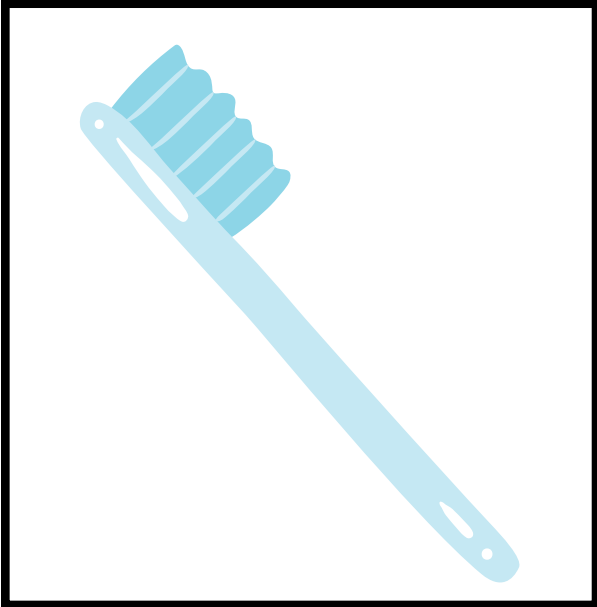


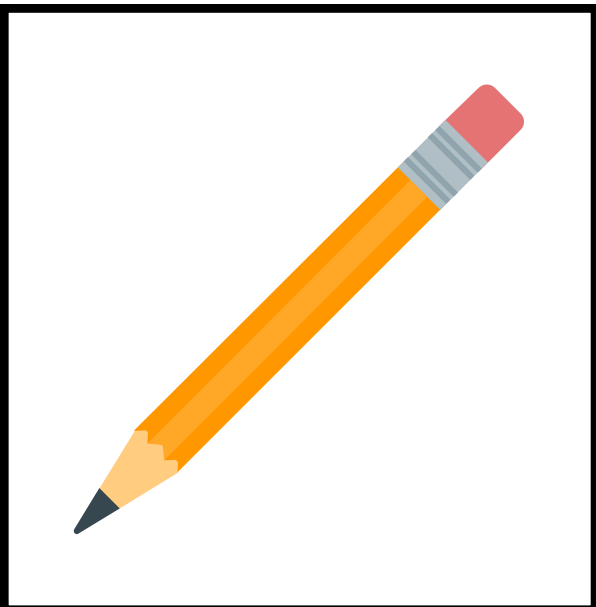
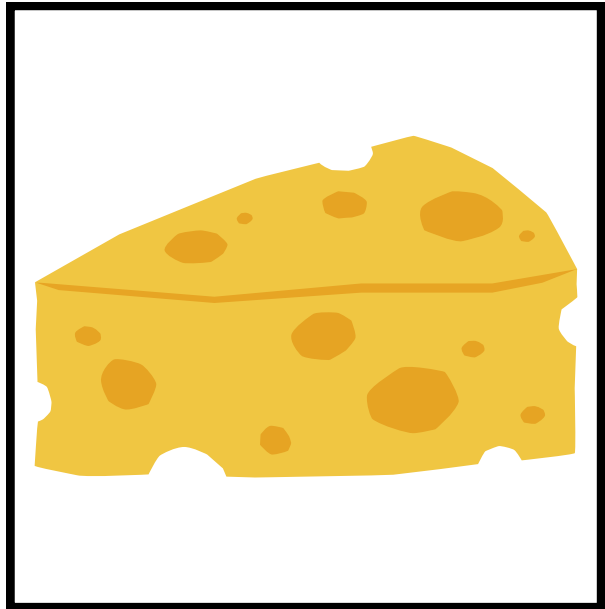
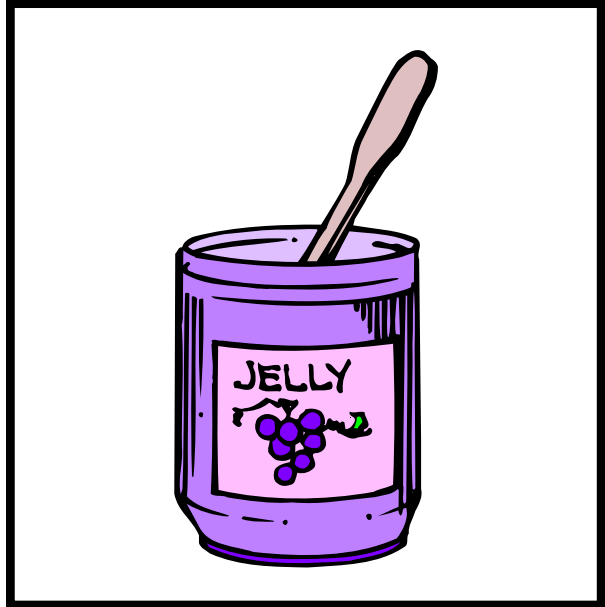
PLACEMAT

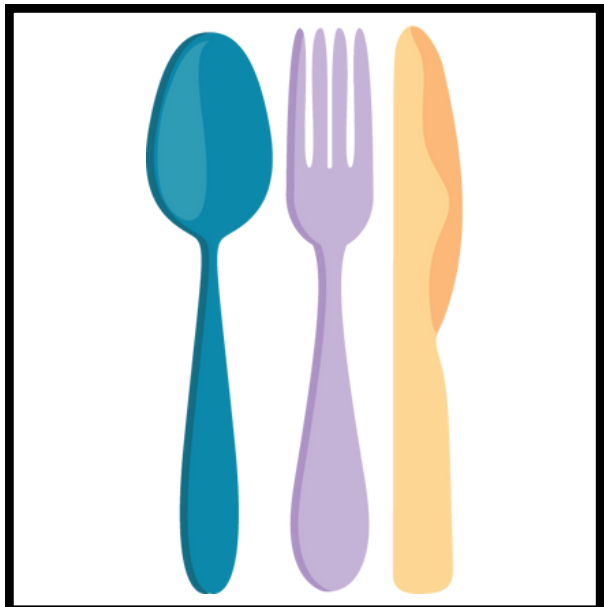
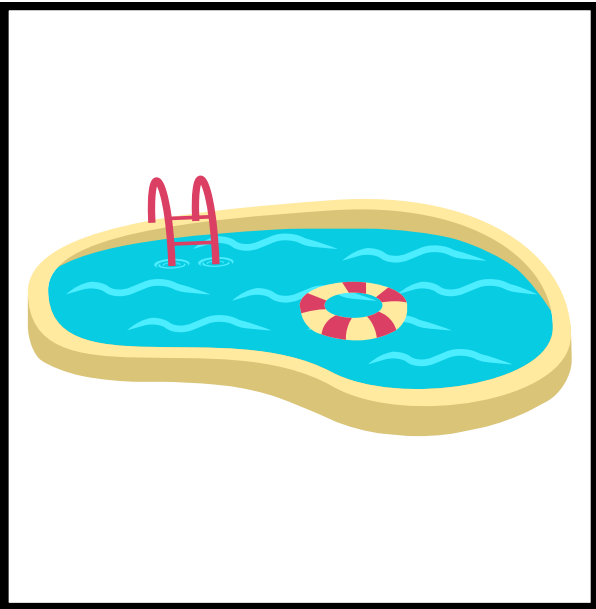


PLACEMAT









OPTIONS

